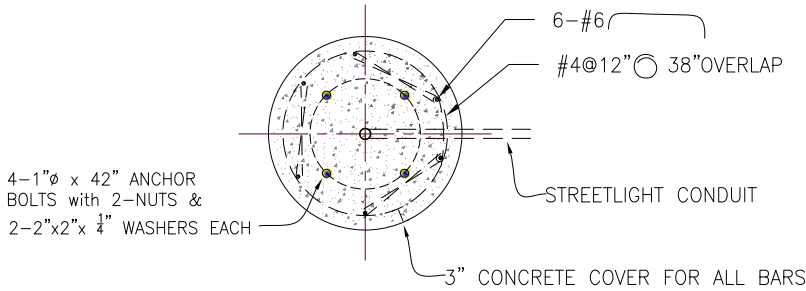
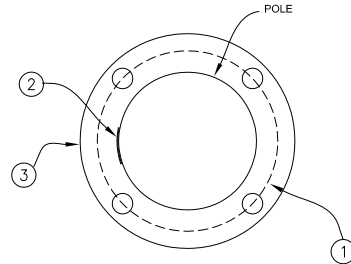


ANCHORAGE DETAIL NOTES:

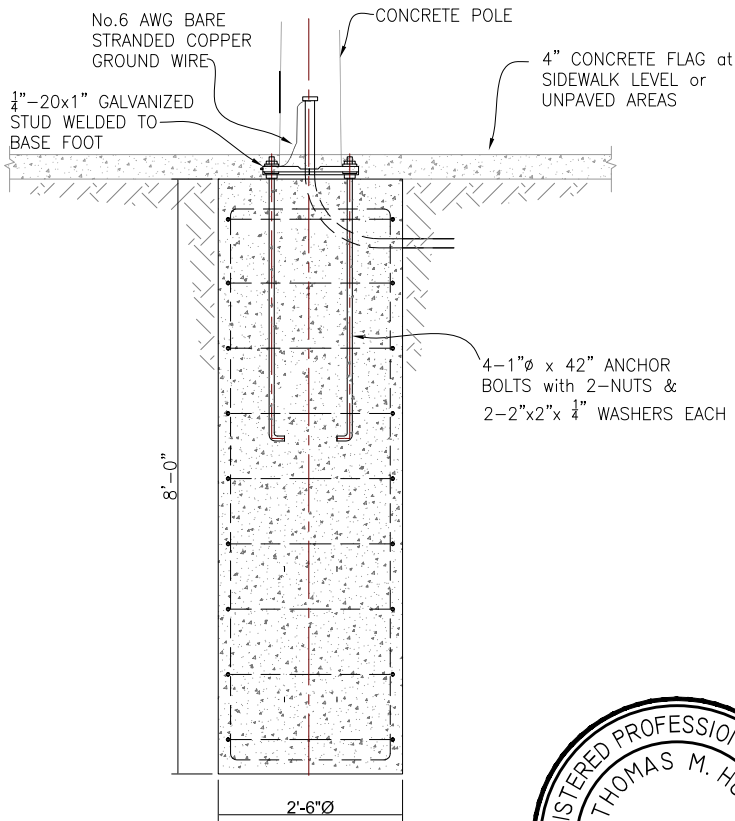
- ① 10" BOLT CIRCLE
- ② HANDHOLE (TYP)
- ③ 19.5" BASE



SECTION A
Scale: ___ NTS



ANCHORAGE DETAIL
Scale: _____NTS



SECTION DETAIL
Scale: _____NTS

NOTES:

1. CONCRETE STRENGTH TO BE 4,000psi, CLASS 7 4000-1, 1.5 WITH 4-INCHES MAXIMUM SLUMP.
2. REINFORCING TO BE ASTM A615, GR. 60.
3. FOUNDATION SET TO CURE A MINIMUM OF 5-DAYS.
4. ALL MATERIALS and DIMENSION OF PIER FOOTING ARE DESCRIBED BY TECHNICAL MEMO FROM PUC/EMB-STR GROUP (AUGUST 2016).



City and County of San Francisco
PUBLIC UTILITIES COMMISSION
POWER ENTERPRISE
UTILITY SERVICES / STREET LIGHTING

NO.	DATE	DESCRIPTION	BY	APP.

TABLE OF REVISIONS
CHECK WITH TRACING TO SEE IF YOU HAVE LATEST REVISION

DETAILED By: RCIavel	DATE: 9/22/2020	APPROVED: HDoan	PROJECT TITLE:
RECOMMENDED By: EDille	DATE: 3/13/2019	MAINTENANCE SECTION	Streetlight Concrete Pole Foundation Installation Detail1
REVIEWED By: RHuang	DATE: 9/22/2020	ENGINEERING SECTION	
REVIEWED By: (EMB-Structural) Thomas Hull	DATE: 3/13/2019	SECTION MANAGER	

SPECIFICATION NO.
DRAWING NO. 1 OF 1
FILE NO. PEENG-09
REV. NO.

Plot Time: Fri, 25 Sep 2020 - 7:27am
 Drawing Path: W:\BHP\1\ Technical Engineering, Pole Asset Management and Mapping As-Built\SL Recommended Construction\PEENG-09 SL Concrete Pole Foundation Installation Detail.dwg, Login: rciavel