

Legend

Trails

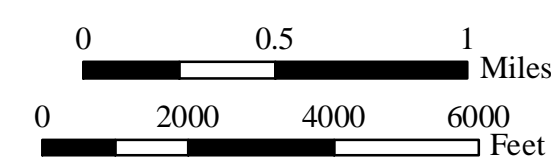
- Fifiel-Cahill Ridge Trail
- Existing multi-use Trail
- Access Road
- SFPUC Land



San Francisco Public Utilities Commission
Water Supply and Treatment Division
Land and Resources Management Section

Author: JGL Date: 3/9/04 File: pridgetrail24r.mxd

Source: USGS Digital Elevation Model (10m) and USGS DLG, SFPUC / LRMS GIS.
Original GIS mapping by EDAW Inc.



Peninsula Watershed Fifiel-Cahill Ridge Trail

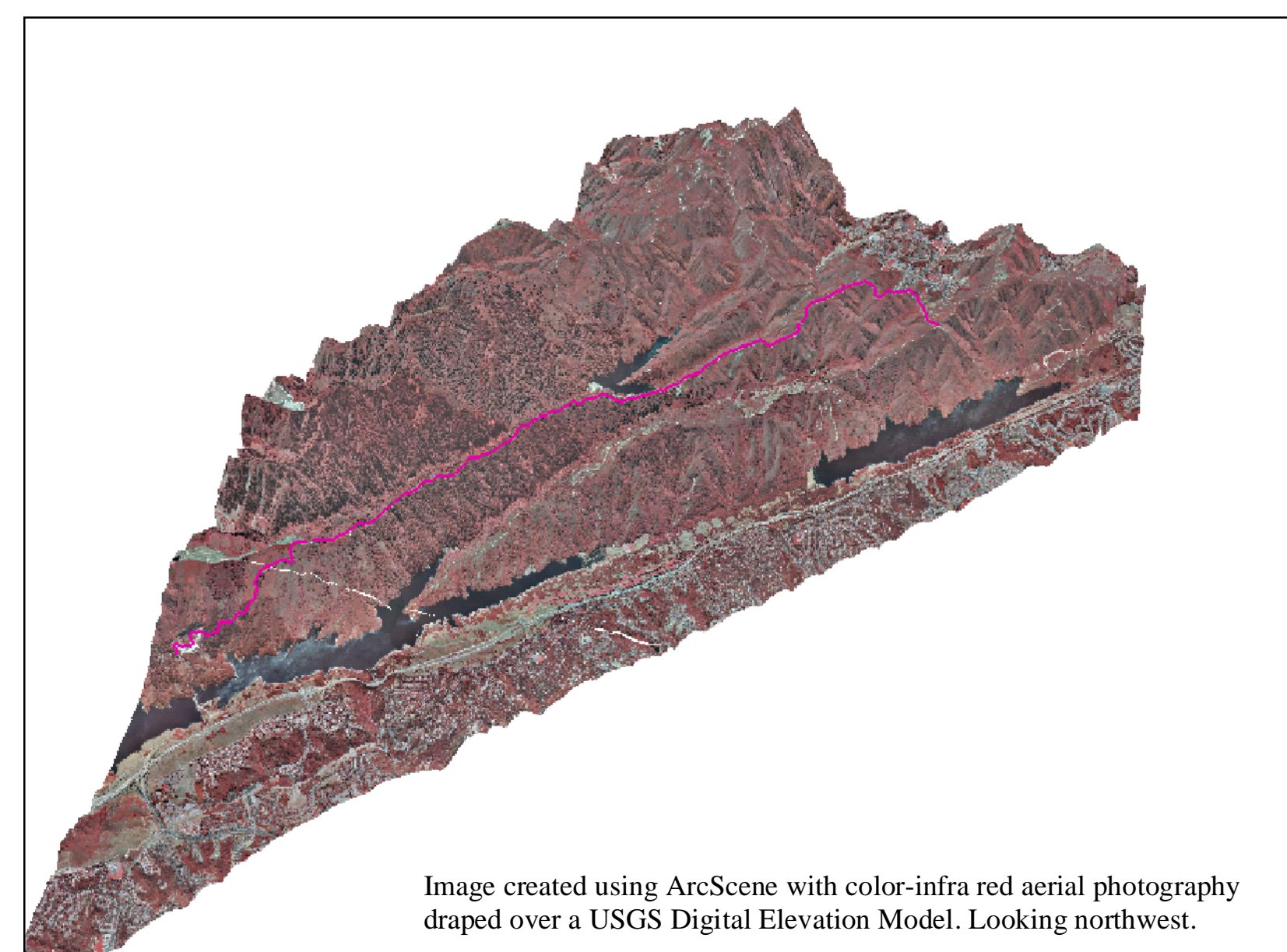
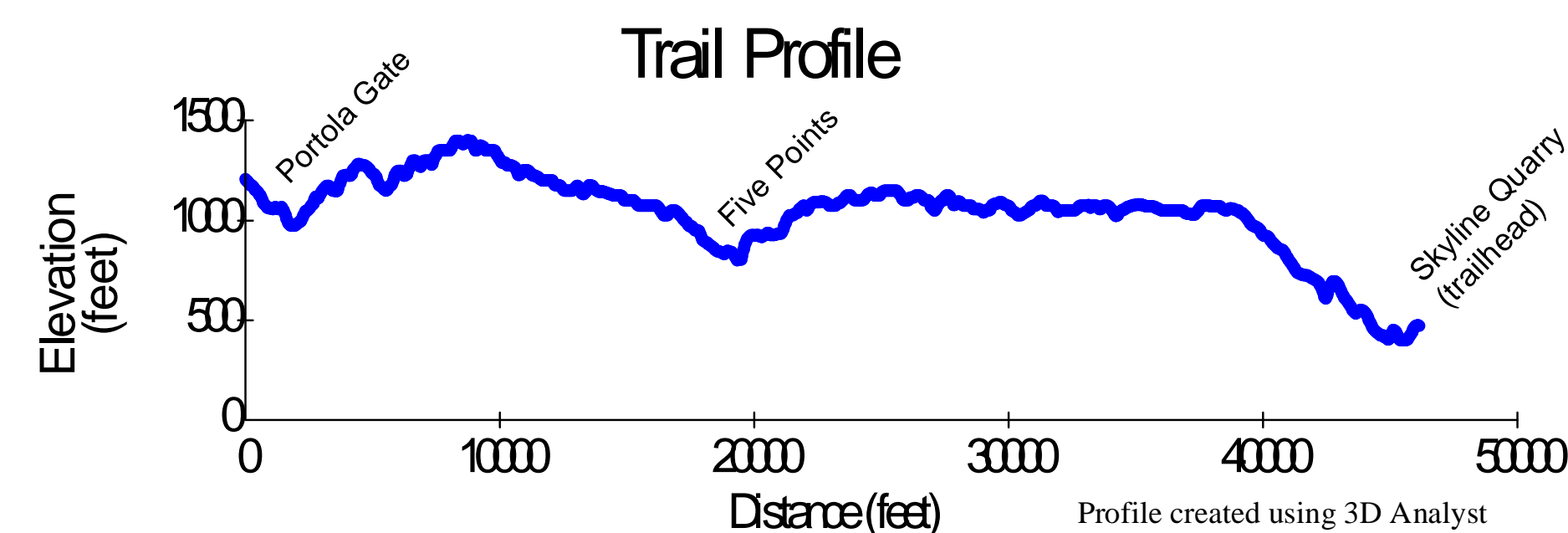


Image created using ArcScene with color-infrared aerial photography draped over a USGS Digital Elevation Model. Looking northwest.



Looking north from Fifiel Ridge. Photo courtesy of Kennedy/Jenks Consultants



The Fifiel-Cahill Ridge Trail Balancing Watershed Protection and Public Recreation

The San Francisco Public Utilities Commission (SFPUC) opened the Fifiel-Cahill Ridge Trail in the summer of 2003. The trail passes through the SFPUC Peninsula Watershed, which provides drinking water to San Francisco and surrounding areas. This watershed has the highest concentration of rare and endangered species in the San Francisco Bay Area. It is also a State Fish and Game Refuge and has been designated an International Biosphere by UNESCO.

Docent-led tours are available by reservation. Guided tours were implemented as a compromise between providing public access and preserving resource values.

ArcInfo GIS was used to assess trail options, conduct biological surveys, monitor conditions and create maps for public displays.



San Francisco
Public Utilities Commission

